

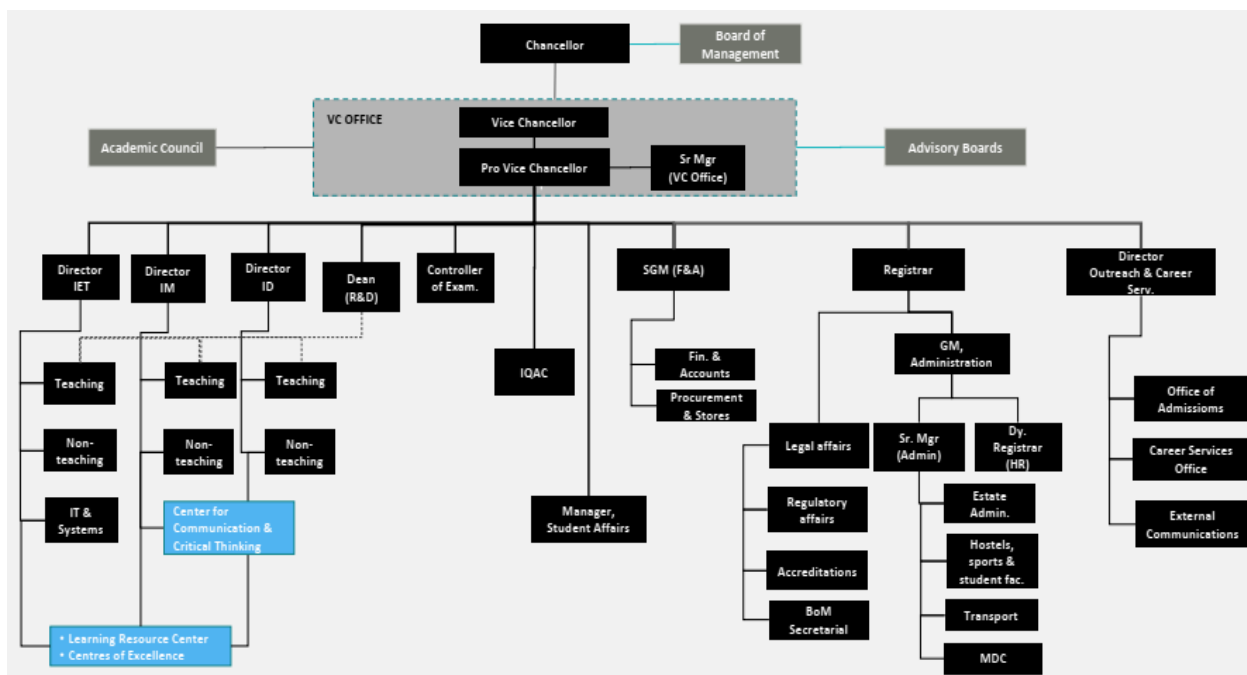


### 6.2.2 Additional Information

Criteria	Criterion 6 – Governance, Leadership and Management
Key Indicator	6.2 Strategy Development and Deployment
Metric	6.2.2 The functioning of the institutional bodies is effective and efficient as visible from policies, administrative setup, appointment and service rules, procedures, etc.

**Response:**

JKLU has a well-defined structure with appropriate hierarchy levels in place to support the University's effective and efficient functioning. The University's organisation and operation can be summarised as follows:



JKLU: Organization Chart

The **Board of Management** is the apex body of the University. It provides leadership for all academic and administrative issues. This Board includes the Chancellor, Pro-Chancellor and Vice-



Chancellor. The Board has representation from academic, industry and policy leadership from across the country alongwith Registrar and a nominee of the state government. Directors of the institutes are permanent invitees o BOM.

**Academic Advisory Board** at the University helps it to strengthen the academic environment. Eminent academicians from the country and abroad, are its members they help the University in ensuring that its programmes and curriculum are contemporary and future-ready.

**Academic Council** is the University's principal academic body and employs general oversight over the University's academic policies, subject to the terms of the Act and the Rules, Regulations, Statutes, or Ordinances issued thereunder. The Vice-Chancellor serves as the Council's Chairman, and other members include the Pro-Vice-Chancellor, renowned academics and industry representations, heads of the constituent institutes, faculty representatives, and the University's Registrar.

**Research Advisory Board** at the University helps it to strengthen its research agenda.

**Boards of Studies** are responsible for periodically reviewing the curricula and syllabi at the University. The recommendations are forwarded to the Academic Council for consideration and approval.

**Vice-Chancellor** is the Principal Executive and Academic Officer of the University. He/she is also the Ex-Officio Chairman of the Academic Council.

**Pro-Vice-Chancellor, Director** of the Institutes and **Registrar**, are other important Officers of the University, whom the Board appoints on the recommendation of the Vice-Chancellor.

**Registrar** is a statutory position in the University and responsible for all operating issues in the areas of administration and meeting statutory compliance with all government bodies.

**Senior General Manager (Finance & Accounts)** plays the Chief Finance and Accounts Officer role and exercises general supervision over the University's funds.

**Internal Quality Assurance Cell (IQAC)** drives and oversees the quality initiatives in various areas at the University.



The above positions are assisted by the Officers on Special Duty (OSDs), Joint Registrars, Deputy Registrars, Assistant Registrars and Administrative Officers, wherever required, depending upon the operational requirements of the University.

- The Department Coordinators, Programme Coordinators, Directors, and Assistant Directors who oversee the University's various Centres, Departments, and Cells.
- The University Hostels are managed by a Hostel Committee that reports to the Chief Warden and Wardens.
- A section is led by a Section Officer, supported by Senior Assistants, Assistants, and Administrative Executives.
- The Estate section of the University looks after the Engineering and Administration activities. General Manager (Administration) heads it with support from Estate Officers, Engineers, Assistant Engineers and other supporting staff to discharge his/her duties.
- There are various committees and cells, such as Grievance Redressing Cell, Disciplinary and Anti-ragging Committee, Committee for prevention of sexual harassment at work, Examination Committee, Purchase Committee etc., which work towards their respective agenda and ensure smooth functioning of the University.
- The unique mentoring-based education system, wherein each student is assigned a mentor who handholds the student during their journey with at, ensures the much-needed support.